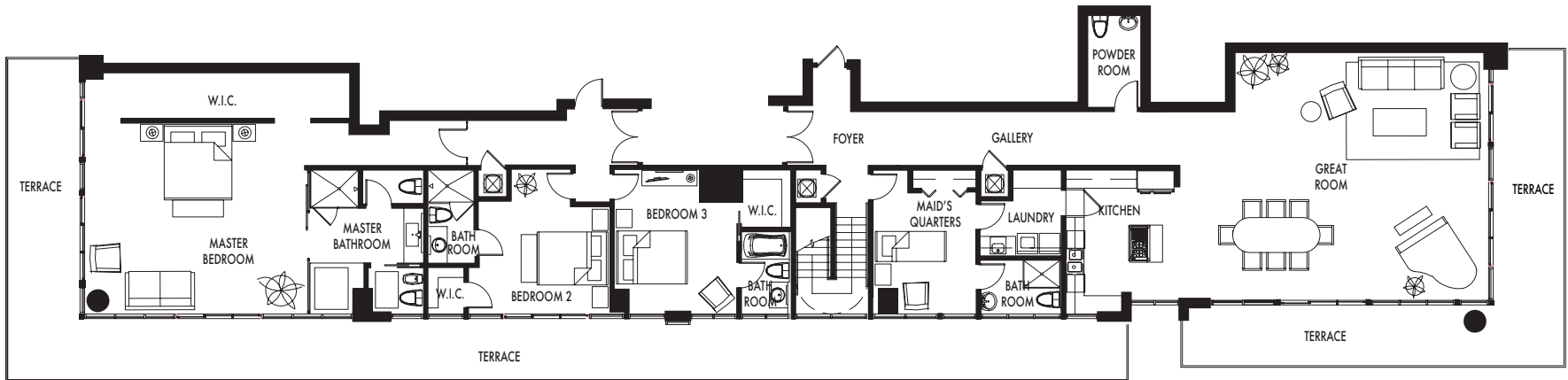
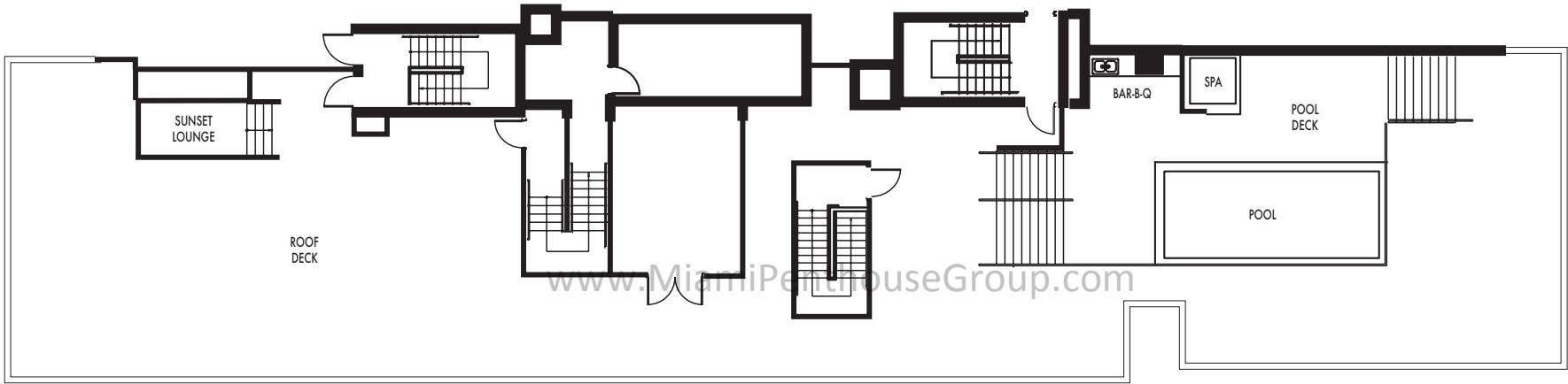


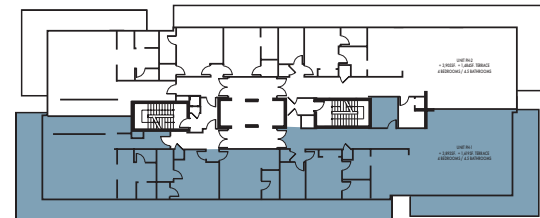


SOUTH TOWER - UNIT PH3



4 BEDROOM / 4.5 BATH

TOTAL 3,906 sq.ft.



Prices, Features and Specifications subject to change without notice. The developer makes no representations or warranties regarding the actual size and dimension of the units contained in this brochure and no party may rely upon the same in determining whether to purchase a unit and the purchase price of the unit. The survey of the actual units and provisions of the declaration of condominium shall control in determining the boundaries and actual dimension of units.